

# Going Again...

The UK Circumnavigation from both directions

John Willacy

[www.performancesekayak.co.uk](http://www.performancesekayak.co.uk)

# Apologies

For the standard of photography







# United Kingdom

## Ireland

### Isle of Man

Inverness

Aberdeen

Dundee

Perth

Kirkcaldy

Glasgow

Edinburgh

Ayr

Londonderry / Derry

Letterkenny

Belfast

Sligo

Irish Sea

Blackpool

Leeds

Manchester

Hull

Liverpool

Sheffield

Stoke-on-Trent

Nottingham

Leicester

Norwich

Bilston

Birmingham

Cambridge

Cardiff

London

Bristol

Feltham

Barnstaple

Southampton

Portsmouth

Brighton

Exeter

Plymouth

English Channel

Antwerp

Lille

UK1-2012  
Clockwise





UK2 - 2015  
Anti-Clockwise



# Some Statistics

	UK1	UK2
	13 <sup>th</sup> Apr – 23 <sup>rd</sup> June	21 <sup>st</sup> May – 11 <sup>th</sup> Aug
Elapsed:	72 days	83 days
Distance:	1773 nm	1860 nm
	(2040 miles, 3284 km)	(2140 miles, 3445 km)
Paddling Days:	62	72
Non-Paddling Days:	10	11

# Background

*30 years of getting ready*

Working my way up

Doing a Kylie

Races, Challenges and Records

















ROCKPOOL

**Why UK1?**

**Why UK2?**

**Why Anti-Clockwise?**

**Why Supported?**











































★ ROCKPOOL

PETZL  
TARAN  
★  
ORTLIEB  
WATERPROOF



**Why UK1?**

**Why UK2?**

**Why Anti-Clockwise?**

**Why Supported?**

# Preparation

**Maps, Boxes and Boats**





# Heading South

*Under Way*

Why Lundy?  
Dusky Devon  
Easy Land's End





# United Kingdom

## Ireland

### Isle of Man

Inverness

Aberdeen

Dundee

Perth

Kirkcaldy

Glasgow

Edinburgh

Ayr

Londonderry / Derry

Letterkenny

Belfast

Sligo

Irish Sea

Blackpool

Leeds

Manchester

Hull

Liverpool

Sheffield

Stoke-on-Trent

Nottingham

Leicester

Norwich

Bilston

Birmingham

Cambridge

Cardiff

London

Bristol

Feltham

Barnstaple

Southampton

Portsmouth

Brighton

Exeter

Plymouth

English Channel

Antwerp

Lille



# Lundy

Day 1 – 21<sup>st</sup> May  
Stackpole Head - Lundy

30.03 nm

07:32 hrs

O.A. 3.99 kts

Why Lundy?  
First-day faff!  
The Bearded Willy-dangler





























# WESTERN APPROACHES TO SAINT GEORGE'S CHANNEL AND BRISTOL CHANNEL

DEPTHS IN METRES

SCALE 1:500,000 at lat 55°00'

Depths are in metres and are related to Chart Datum, which is approximately the level of Lowest Astronomical Tide. Heights are in metres. Underlined figures are drying heights above Chart Datum. All other heights are above Mean High Water Springs.

Positions are referred to the WGS84 compatible datum. European Terrestrial Reference System (ETRS) datum. Navigational marks: IALA Maritime Buoyage System - Region A (1982 to present).

Source: Reference should be made to larger scale charts for the contents of inshore detail. The water hydrography is derived from sounding surveys of 1953 and 1955 and lines of passage soundings.

## LOCAL TIDINGS

1. Local tides should be used for the approach to the Bristol Traffic Separation Scheme and the Cardiff Channel (see 1.4.1).  
2. A tidal gauge is situated at the Cardiff Channel (see 1.4.1).  
3. A tidal gauge is situated at the Cardiff Channel (see 1.4.1).  
4. A tidal gauge is situated at the Cardiff Channel (see 1.4.1).

## TIDAL INFORMATION

1. Local tides should be used for the approach to the Bristol Traffic Separation Scheme and the Cardiff Channel (see 1.4.1).  
2. A tidal gauge is situated at the Cardiff Channel (see 1.4.1).  
3. A tidal gauge is situated at the Cardiff Channel (see 1.4.1).

## NATIONAL METEOROLOGICAL SERVICE

1. Local tides should be used for the approach to the Bristol Traffic Separation Scheme and the Cardiff Channel (see 1.4.1).  
2. A tidal gauge is situated at the Cardiff Channel (see 1.4.1).  
3. A tidal gauge is situated at the Cardiff Channel (see 1.4.1).

## LOCAL TIDINGS

1. Local tides should be used for the approach to the Bristol Traffic Separation Scheme and the Cardiff Channel (see 1.4.1).  
2. A tidal gauge is situated at the Cardiff Channel (see 1.4.1).  
3. A tidal gauge is situated at the Cardiff Channel (see 1.4.1).

## TIDAL INFORMATION

1. Local tides should be used for the approach to the Bristol Traffic Separation Scheme and the Cardiff Channel (see 1.4.1).  
2. A tidal gauge is situated at the Cardiff Channel (see 1.4.1).  
3. A tidal gauge is situated at the Cardiff Channel (see 1.4.1).

## NATIONAL METEOROLOGICAL SERVICE

1. Local tides should be used for the approach to the Bristol Traffic Separation Scheme and the Cardiff Channel (see 1.4.1).  
2. A tidal gauge is situated at the Cardiff Channel (see 1.4.1).  
3. A tidal gauge is situated at the Cardiff Channel (see 1.4.1).

## LOCAL TIDINGS

1. Local tides should be used for the approach to the Bristol Traffic Separation Scheme and the Cardiff Channel (see 1.4.1).  
2. A tidal gauge is situated at the Cardiff Channel (see 1.4.1).  
3. A tidal gauge is situated at the Cardiff Channel (see 1.4.1).

## TIDAL INFORMATION

1. Local tides should be used for the approach to the Bristol Traffic Separation Scheme and the Cardiff Channel (see 1.4.1).  
2. A tidal gauge is situated at the Cardiff Channel (see 1.4.1).  
3. A tidal gauge is situated at the Cardiff Channel (see 1.4.1).

## NATIONAL METEOROLOGICAL SERVICE

1. Local tides should be used for the approach to the Bristol Traffic Separation Scheme and the Cardiff Channel (see 1.4.1).  
2. A tidal gauge is situated at the Cardiff Channel (see 1.4.1).  
3. A tidal gauge is situated at the Cardiff Channel (see 1.4.1).

## LOCAL TIDINGS

1. Local tides should be used for the approach to the Bristol Traffic Separation Scheme and the Cardiff Channel (see 1.4.1).  
2. A tidal gauge is situated at the Cardiff Channel (see 1.4.1).  
3. A tidal gauge is situated at the Cardiff Channel (see 1.4.1).

## TIDAL INFORMATION

1. Local tides should be used for the approach to the Bristol Traffic Separation Scheme and the Cardiff Channel (see 1.4.1).  
2. A tidal gauge is situated at the Cardiff Channel (see 1.4.1).  
3. A tidal gauge is situated at the Cardiff Channel (see 1.4.1).

## NATIONAL METEOROLOGICAL SERVICE

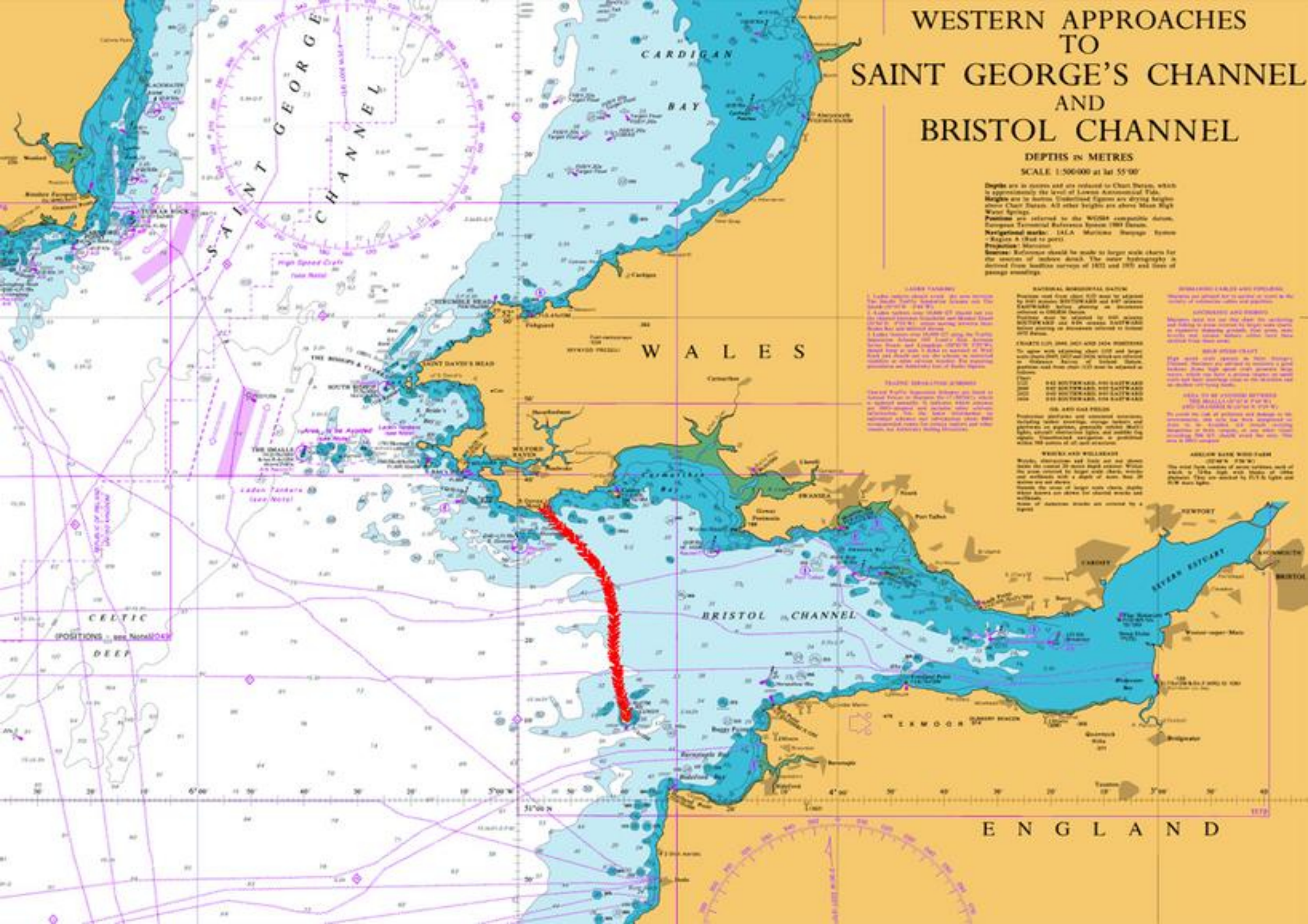
1. Local tides should be used for the approach to the Bristol Traffic Separation Scheme and the Cardiff Channel (see 1.4.1).  
2. A tidal gauge is situated at the Cardiff Channel (see 1.4.1).  
3. A tidal gauge is situated at the Cardiff Channel (see 1.4.1).

## LOCAL TIDINGS

1. Local tides should be used for the approach to the Bristol Traffic Separation Scheme and the Cardiff Channel (see 1.4.1).  
2. A tidal gauge is situated at the Cardiff Channel (see 1.4.1).  
3. A tidal gauge is situated at the Cardiff Channel (see 1.4.1).

## TIDAL INFORMATION

1. Local tides should be used for the approach to the Bristol Traffic Separation Scheme and the Cardiff Channel (see 1.4.1).  
2. A tidal gauge is situated at the Cardiff Channel (see 1.4.1).  
3. A tidal gauge is situated at the Cardiff Channel (see 1.4.1).

































# The First Corner

*Onto the South Coast*

Lovely Lizard  
Nice Miles!  
Return to Bud!  
Suffering the Shingle























# Portland Bill

Day 14 – 3<sup>rd</sup> June  
West Bay - Portland

23.7 nm  
05:01 hrs  
O.A. 4.73 kts

3 hours of gravel  
Portland – for the last time



# Portland Bill

Day 14, Weymouth - from the diary:

*“...Glad that is over. Portland Bill was rather unpleasant – don’t ever want to do that again. Never again.”*



# United Kingdom

## Ireland

### Isle of Man

Inverness

Aberdeen

Dundee

Perth

Kirkcaldy

Glasgow

Edinburgh

Ayr

Londonderry / Derry

Letterkenny

Belfast

Sligo

Irish Sea

Blackpool

Leeds

Manchester

Hull

Liverpool

Sheffield

Stoke-on-Trent

Nottingham

Leicester

Norwich

Bilston

Birmingham

Cambridge

Cardiff

London

Bristol

Feltham

Barnstaple

Southampton

Portsmouth

Brighton

Exeter

Plymouth

English Channel

North Sea

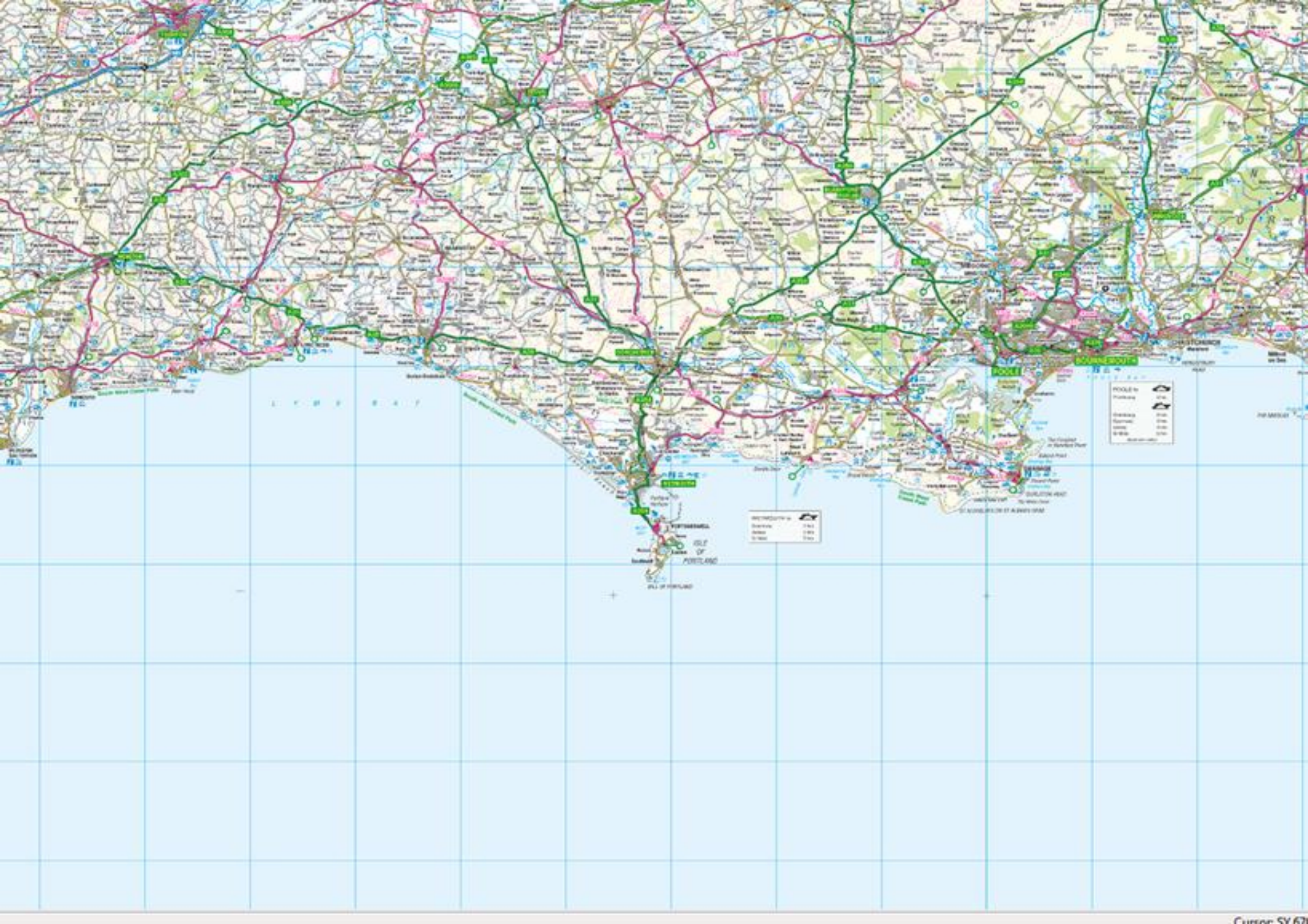
Ro

Antwerp

Lille

E

















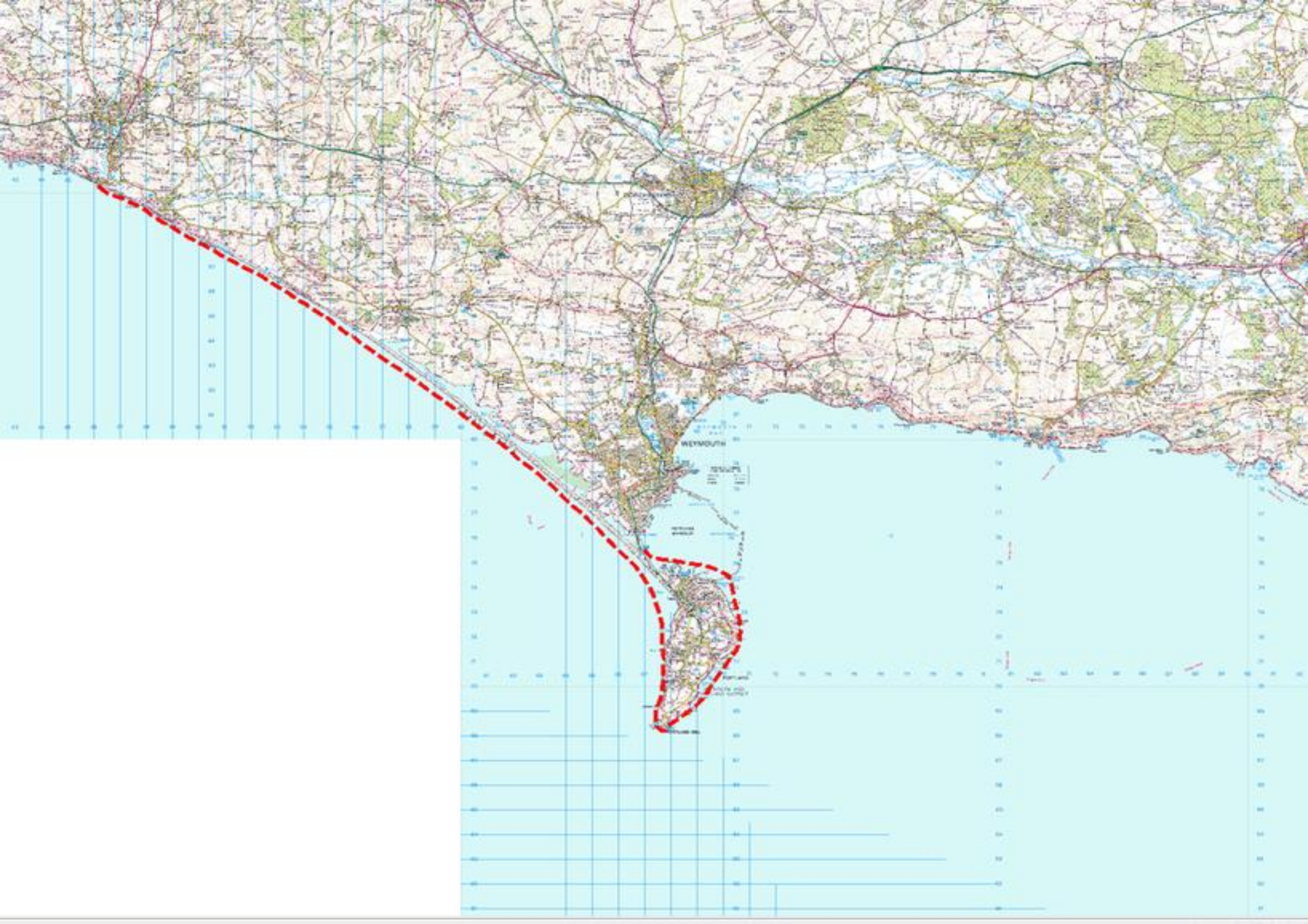
















# The Solent

Day 16 – 5<sup>th</sup> June  
Swanage - Gosport

35.1 nm  
06:16 hrs  
O.A. 5.59 kts

Downwind Surf  
Posh Bingo  
Dodging Boats  
Start of the Shingle





# United Kingdom

## Ireland

### Isle of Man

Inverness

Aberdeen

Dundee

Perth

Kirkcaldy

Glasgow

Edinburgh

Ayr

Londonderry / Derry

Letterkenny

Belfast

Sligo

Irish Sea

Blackpool

Leeds

Manchester

Hull

Liverpool

Sheffield

Stoke-on-Trent

Nottingham

Leicester

Norwich

Bilston

Birmingham

Cambridge

Cardiff

London

Bristol

Feltham

Barnstaple

Southampton

Portsmouth

Brighton

Exeter

Plymouth

English Channel

Antwerp

Lille













Hapag-Lloyd

GRENCH EXPRESS





































# Dungeness

Day 20 – 9<sup>th</sup> June  
Hastings - Dungeness

19.6 nm  
06:15 hrs  
O.A. 3.14 kts

Lies, Threats and More Shingle  
High Pressure!





# United Kingdom

## Ireland

### Isle of Man

Inverness

Aberdeen

Dundee

Perth

Kirkcaldy

Glasgow

Edinburgh

Ayr

Londonderry / Derry

Letterkenny

Belfast

Sligo

Irish Sea

Blackpool

Leeds

Manchester

Hull

Liverpool

Sheffield

Stoke-on-Trent

Nottingham

Leicester

Norwich

Bilston

Birmingham

Cambridge

Cardiff

London

Bristol

Feltham

Barnstaple

Southampton

Portsmouth

Brighton

Exeter

Plymouth

English Channel

North Sea

Ro

Antwerp

Lille

E











































# ENGLAND - EAST COAST THAMES ESTUARY

DEPTH - METRES  
SCALE 1:50,000





# Van Life

*‘Where the \*\*\*\* is my \*\*\*\* cag? Well, who put it there then?’*

Bad Back

More Kit, Dry Kit

Van Admin

Expense

Too Comfortable

Tourist or Adventurer

Consideration

Close Quarters

# A day in the office (UK1)

Alarm goes off far too early

Check for pain/anything that has dropped off in  
the night

Food

Empty tent, pack kit and drop tent

Shift kit and boat to water

Change into paddle kit, load boat and final pack

Now 2hrs since alarm

Launch

Paddle

Paddle some more

Scary landing\*

Shift kit and boat up beach

Pitch tent, unload boat, unpack kit

Food

Plan for next day

Diary

Blog

Bed

*Repeat*

\* usually











# Heading North

*The East Coast*

Nice Norfolk

Pleasantly Boring

Dodgy Defences

Endless Erosion

# On The Ebb

Day 26, Shingle Street - from Team Manager's diary:

*“John arrived exhausted and upset, he had an awful crossing to Felixstowe.”*



# On The Ebb

*Paddling the wrong way*

Wind Over Tide

Swell Over Tide – Am Balg, Strathy Point

Featuring Downstream - The Tay

Paddling Floods and Shifts



# United Kingdom

## Ireland

### Isle of Man

Inverness

Aberdeen

Dundee

Perth

Kirkcaldy

Glasgow

Edinburgh

Ayr

Londonderry / Derry

Letterkenny

Belfast

Sligo

Irish Sea

Blackpool

Leeds

Manchester

Hull

Liverpool

Sheffield

Stoke-on-Trent

Nottingham

Leicester

Norwich

Bilston

Birmingham

Cambridge

Cardiff

London

Bristol

Feltham

Barnstaple

Southampton

Portsmouth

Brighton

Exeter

Plymouth

English Channel

Antwerp

Lille



# Felixstowe

Day 26 – 15<sup>th</sup> June

Frinton on Sea – Shingle Street

14.6 nm

03:51 hrs

O.A. 3.8 kts

Monster Faff

Anti-Clockwise Lessons

Even More Shingle!





















# Those Faffing Instincts

Day 47, Lossiemouth – from Team Manager's diary:  
*“Not enough sleep leaves me faffing and undecided all morning”.*

My diary: *“I could agree with this of course, but I'm too tired and can't be arsed.”*













































# Withernsea

Day 33 – 22<sup>nd</sup> June  
Mablethorpe - Withernsea

24.5 nm  
07:18 hrs  
O.A. 3.36 kts

Dodging Donna  
Crossing the Humber  
3 pm weather  
Deja Vu, once again...



# United Kingdom

## Ireland

### Isle of Man

Inverness

Aberdeen

Dundee

Perth

Kirkcaldy

Glasgow

Edinburgh

Ayr

Londonderry / Derry

Letterkenny

Belfast

Sligo

Irish Sea

Blackpool

Leeds

Manchester

Hull

Liverpool

Sheffield

Stoke-on-Trent

Nottingham

Leicester

Norwich

Bilston

Birmingham

Cambridge

Cardiff

London

Bristol

Feltham

Barnstaple

Southampton

Portsmouth

Brighton

Exeter

Plymouth

English Channel

Antwerp

Lille



# ENGLAND - EAST COAST APPROACHES TO THE RIVER HUMBER

DAVIDED IN 1942  
 (REVISED IN 1944)



NOTE: This chart is not to be used for navigation purposes. It is a general reference chart only. For detailed information, consult the appropriate nautical charts and publications.

Chart	Scale	Area	Notes
1	1:10,000	1000	1000
2	1:10,000	1000	1000
3	1:10,000	1000	1000
4	1:10,000	1000	1000
5	1:10,000	1000	1000
6	1:10,000	1000	1000
7	1:10,000	1000	1000
8	1:10,000	1000	1000
9	1:10,000	1000	1000
10	1:10,000	1000	1000

Chart	Scale	Area	Notes
1	1:10,000	1000	1000
2	1:10,000	1000	1000
3	1:10,000	1000	1000
4	1:10,000	1000	1000
5	1:10,000	1000	1000
6	1:10,000	1000	1000
7	1:10,000	1000	1000
8	1:10,000	1000	1000
9	1:10,000	1000	1000
10	1:10,000	1000	1000



















**LARGE  
SIZES**

NO

FOOD OR  
DRINK IN  
THE SHOP

THANK YOU





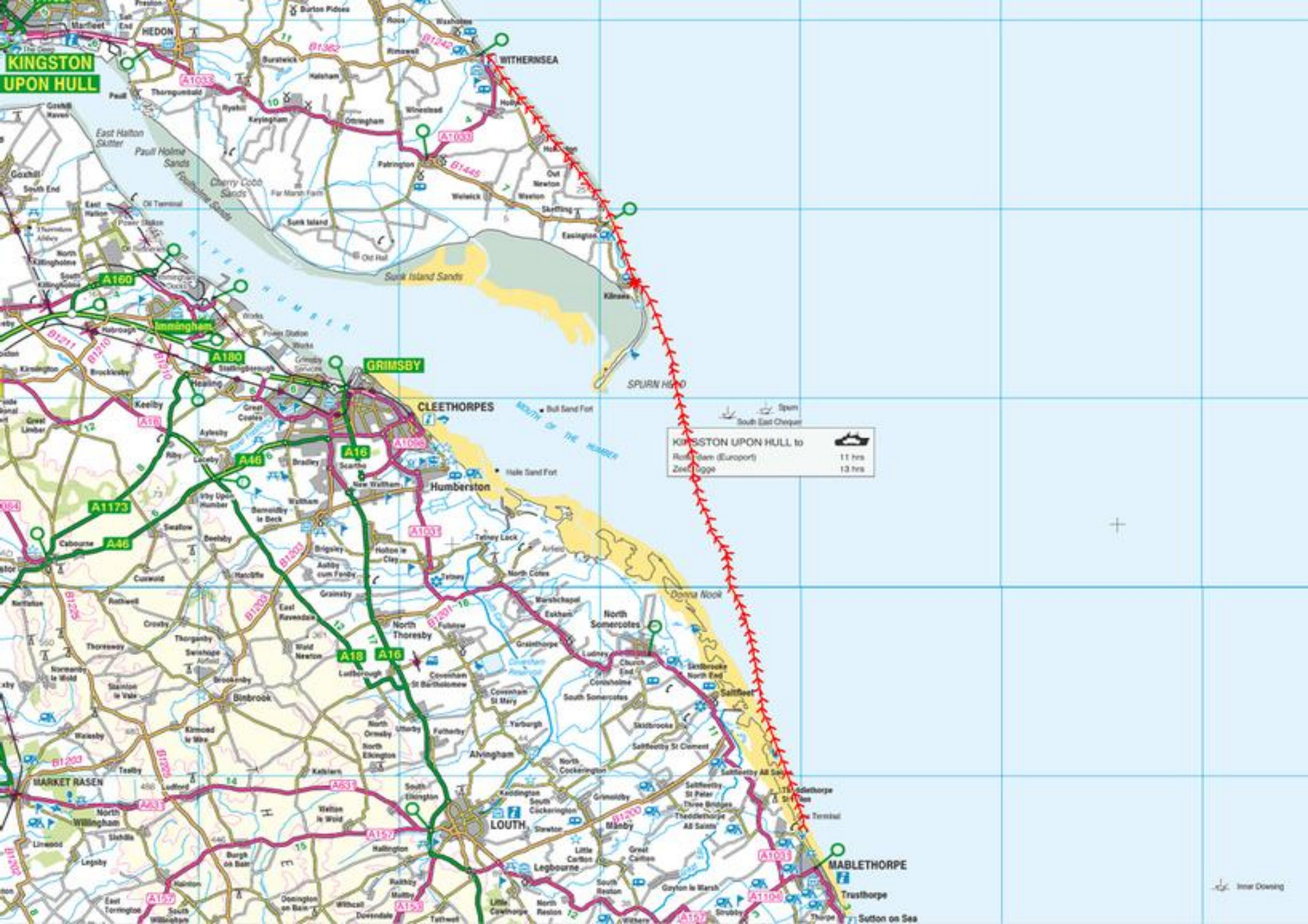






APPROXIMATELY 1 MILE OFFSHORE  
FROM THIS POINT LIES THE SITE OF  
THE 13TH CENTURY  
CHURCH OF ST. MARY THE VIRGIN  
[ONE OF THE SISTER CHURCHES]  
LOST TO EROSION  
BY THE MID 15TH CENTURY





**KINGSTON UPON HULL**

**GRIMSBY**

**CLEETHORPES**

**HUMBERSTON**

**LOUTH**

**MABLETHORPE**

KINGSTON UPON HULL to  
Rougham (Europort) 11 hrs  
Zeebrugge 13 hrs











# The Pressure...

Daily Decisions  
15-25 mph Winds  
100 days  
One Direction  
Confidence













Lifeboats

EYC29B

## Hornsea Beach

999 in an Emergency, ask for Coastguard and state the above code



Beware of large breaking waves



Beware of strong currents



Beware of sudden drop



Beware of submerged objects



Do not use inflatables when windy



Do not kite surf



Do not use personal water craft



No fishing on bathing beach 1 May - 30 Sept

## Seasonal Lifeguard Service

Please look out for the following lifeguard flags displayed on the beach



Swim in Lifeguard patrolled area



Surf board and water craft zone



Do not swim when red flags are present



Do not use inflatables

Red and yellow flags indicate lifeguards on duty



EAST RIDING  
OF YORKSHIRE COUNCIL



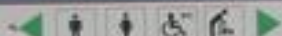
EAST RIDING  
OF YORKSHIRE COUNCIL

## Beach Information

Foreshores office: (01262) 678255

[www.eastriding.gov.uk](http://www.eastriding.gov.uk)

Email: [foreshores@eastriding.gov.uk](mailto:foreshores@eastriding.gov.uk)



First aid



Lost children



Children



Freephone information point



Drinking water



Feeding point



Litter point



Café Beach dog



Beach cleaning / cleanup



Recycling



Beach Protection Trail



Litterbin



Business Institute Museum



Litter bins



Shared use footpath (Please consider other users)



Do not climb on groynes



Do not touch unidentified objects



Warning



Super beach flag



No unauthorised swimming



No unauthorised vehicles



No drinking alcohol on the Promenade



No dog fouling



No dogs on beach 1st May - 30 Sept



THE DOG EXCLUSION ZONE  
DOGS ARE NOT ALLOWED ON THE BEACH FROM 1ST MAY TO 30TH SEPTEMBER  
PLEASE RESPECT THIS



THE DOG EXCLUSION ZONE  
DOGS ARE NOT ALLOWED ON THE BEACH FROM 1ST MAY TO 30TH SEPTEMBER  
PLEASE RESPECT THIS



THE DOG EXCLUSION ZONE  
DOGS ARE NOT ALLOWED ON THE BEACH FROM 1ST MAY TO 30TH SEPTEMBER  
PLEASE RESPECT THIS

For further information visit [www.eastriding.gov.uk](http://www.eastriding.gov.uk)



## Hornsea Beach

### BEACH DESCRIPTION

Hornsea Beach is a long resort beach one kilometre in length. It is made up of sand and pebbles and is at varying heights as a result of the numerous wooden groynes which have been installed to protect the town from coastal erosion.

Urban surface water runoff and bird populations living around the lake may affect the lake's water quality. After heavy rainfall, lake water may overflow into the bathing water area via Stream Dyke. Bathing water quality may sometimes be affected by lake water and storm overflows, particularly after heavy rainfall.



For more information visit  
[www.environmentagency.gov.uk](http://www.environmentagency.gov.uk)











150

ALIC







# Crossing The Border

Shift Work  
Timing of the Ebb  
More Lessons  
Cape Wrath





# United Kingdom

## Ireland

### Isle of Man

Inverness

Aberdeen

Dundee

Perth

Kirkcaldy

Glasgow

Edinburgh

Ayr

Londonderry / Derry

Letterkenny

Belfast

Sligo

Irish Sea

Blackpool

Leeds

Manchester

Hull

Liverpool

Sheffield

Stoke-on-Trent

Nottingham

Leicester

Norwich

Bilston

Birmingham

Cambridge

Cardiff

London

Bristol

Feltham

Barnstaple

Southampton

Portsmouth

Brighton

Exeter

Plymouth

English Channel

Antwerp

Lille





















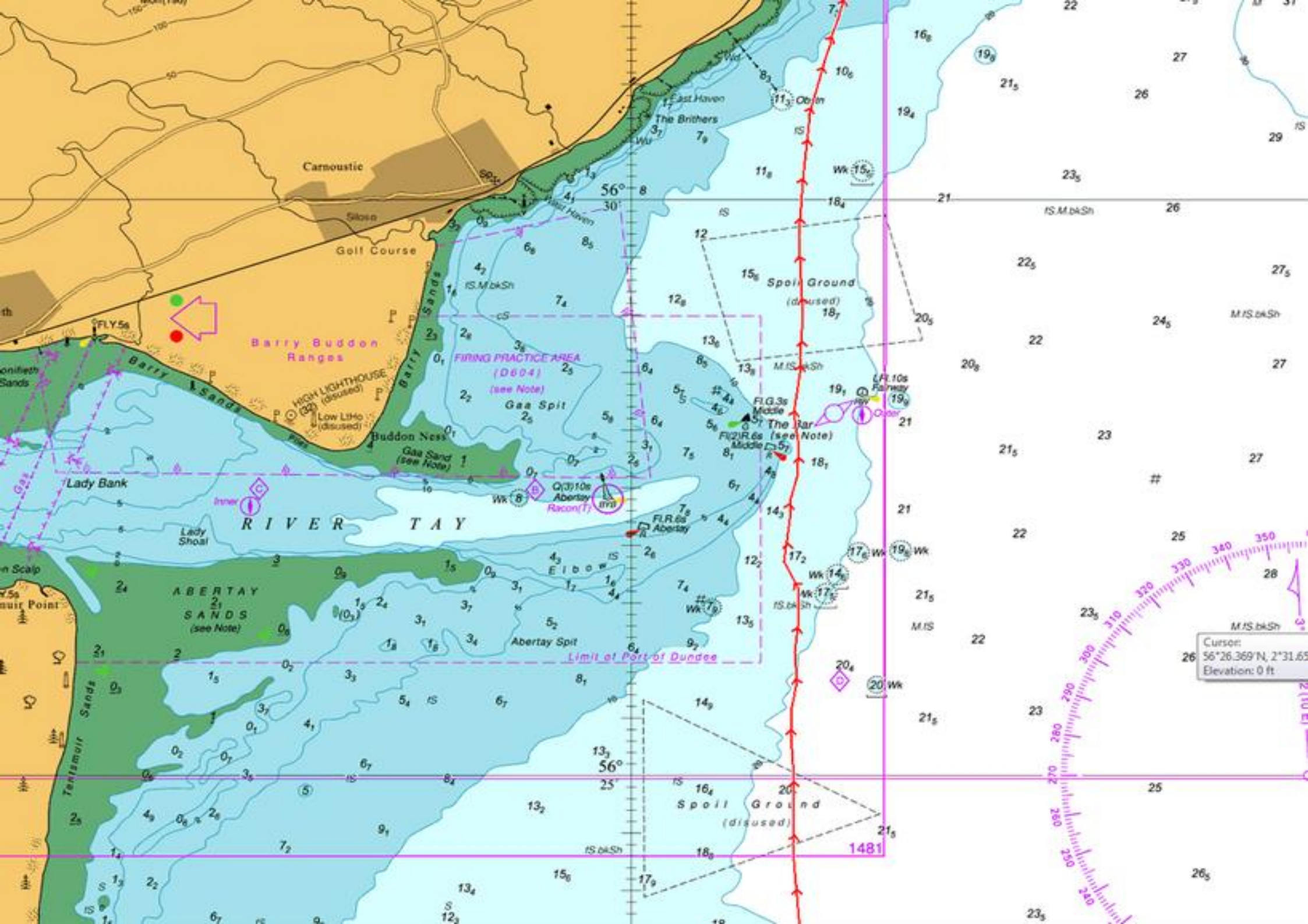
# Sting in the Tay

Day 41 – 30th June  
Dunbar - Arbroath

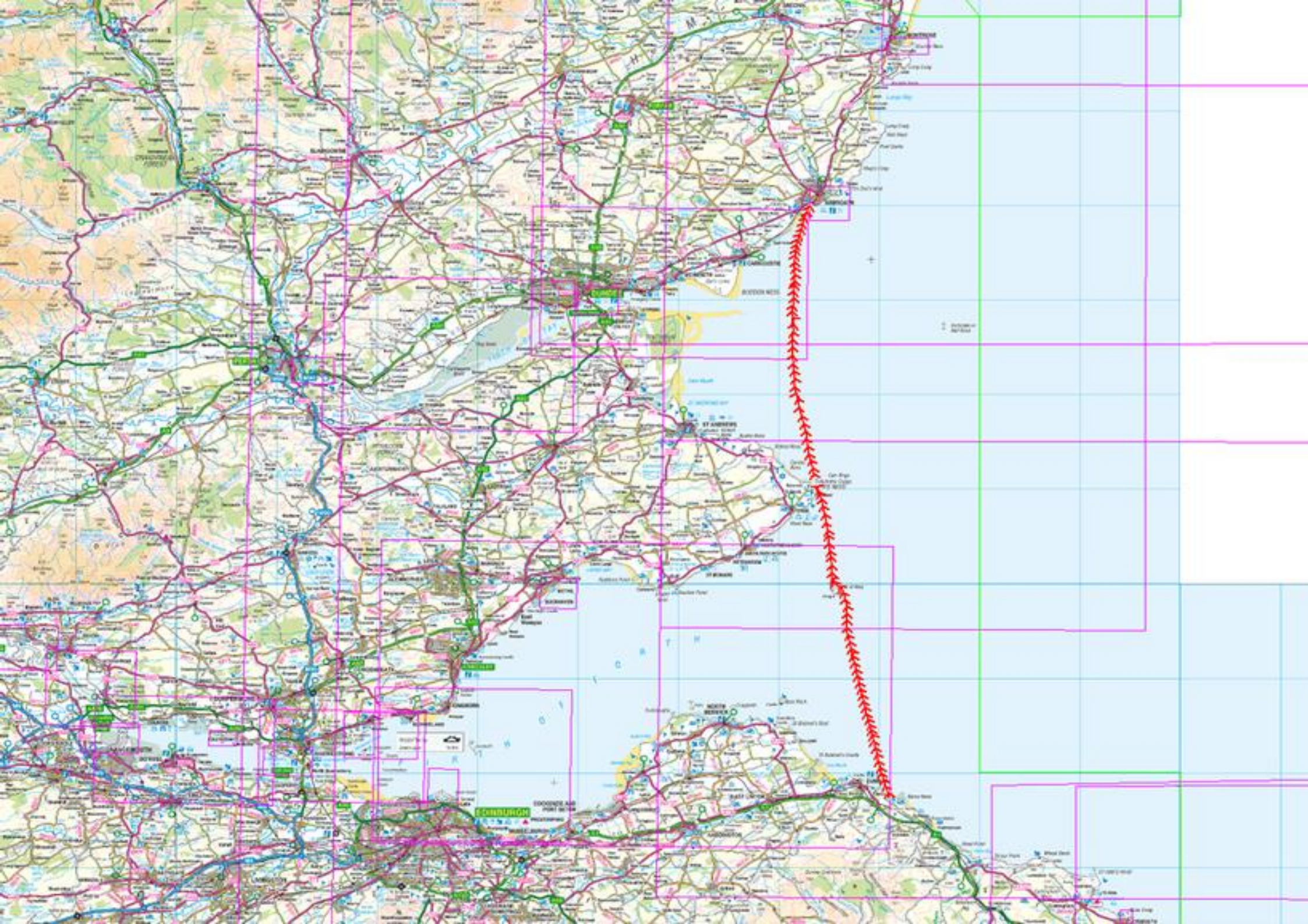
34.6 nm  
07:31 hrs  
O.A. 4.61 kts

WTF?  
A Complacency Lesson  
Return Ticket











# Turning Back

Day 42 – 1<sup>st</sup> July  
Arbroath - Arbroath

5.1 nm  
01:11 hrs  
O.A. 4.34 kts

Local Knowledge



















































# Duncansby Head

Day 52 – 11<sup>th</sup> July  
Dunbeath - Harrow

38.37 nm  
08:22 hrs  
O.A. 4.59 kts

Reputations and Reality  
Evolving Plans  
Going well



# United Kingdom

## Ireland

### Isle of Man

Inverness

Aberdeen

Dundee

Perth

Kirkcaldy

Glasgow

Edinburgh

Ayr

Londonderry / Derry

Letterkenny

Belfast

Sligo

Irish Sea

Blackpool

Leeds

Manchester

Hull

Liverpool

Sheffield

Stoke-on-Trent

Nottingham

Leicester

Norwich

Bilston

Birmingham

Cambridge

Cardiff

London

Bristol

Feltham

Barnstaple

Southampton

Portsmouth

Brighton

Exeter

Plymouth

English Channel

Antwerp

Lille

























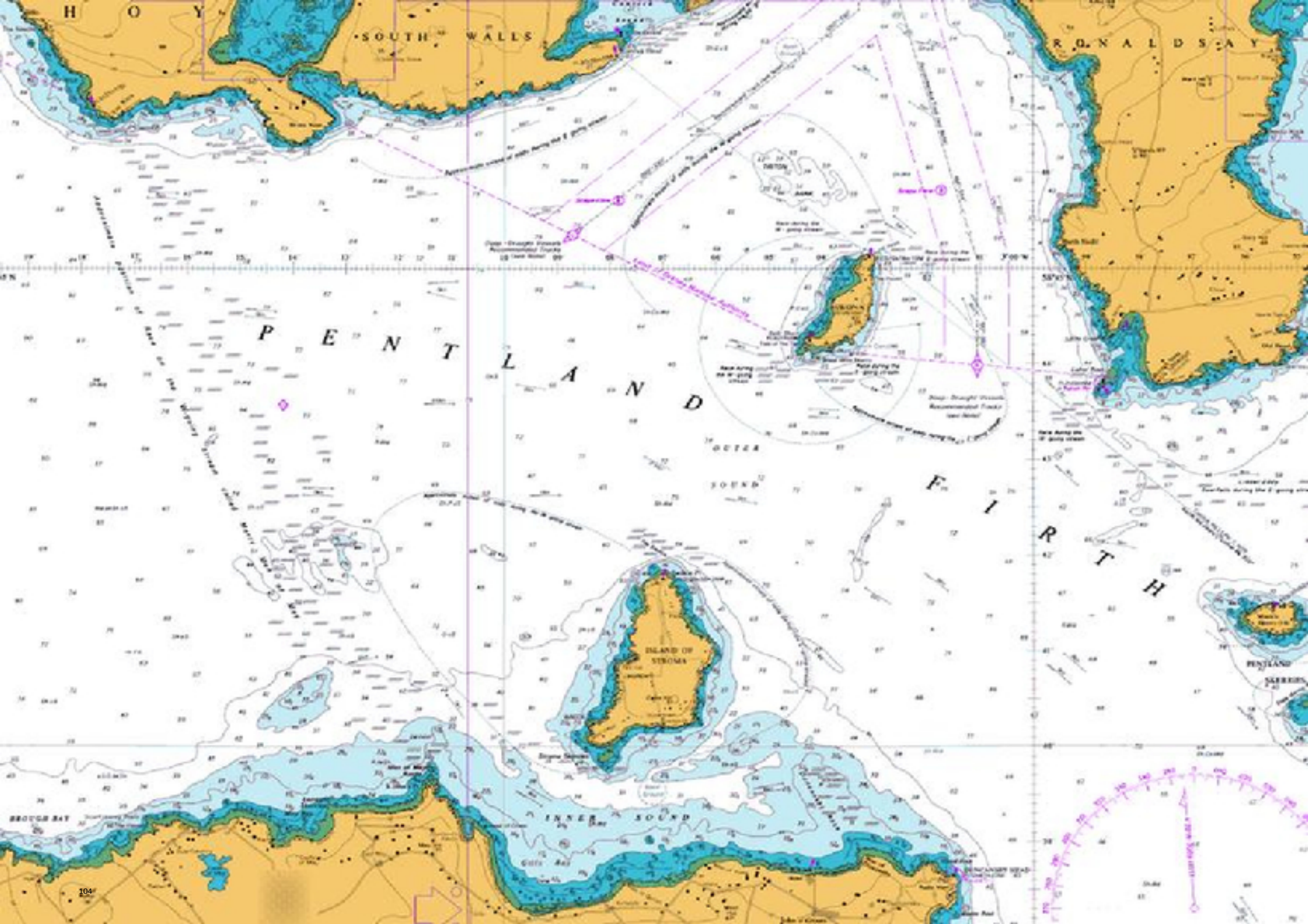




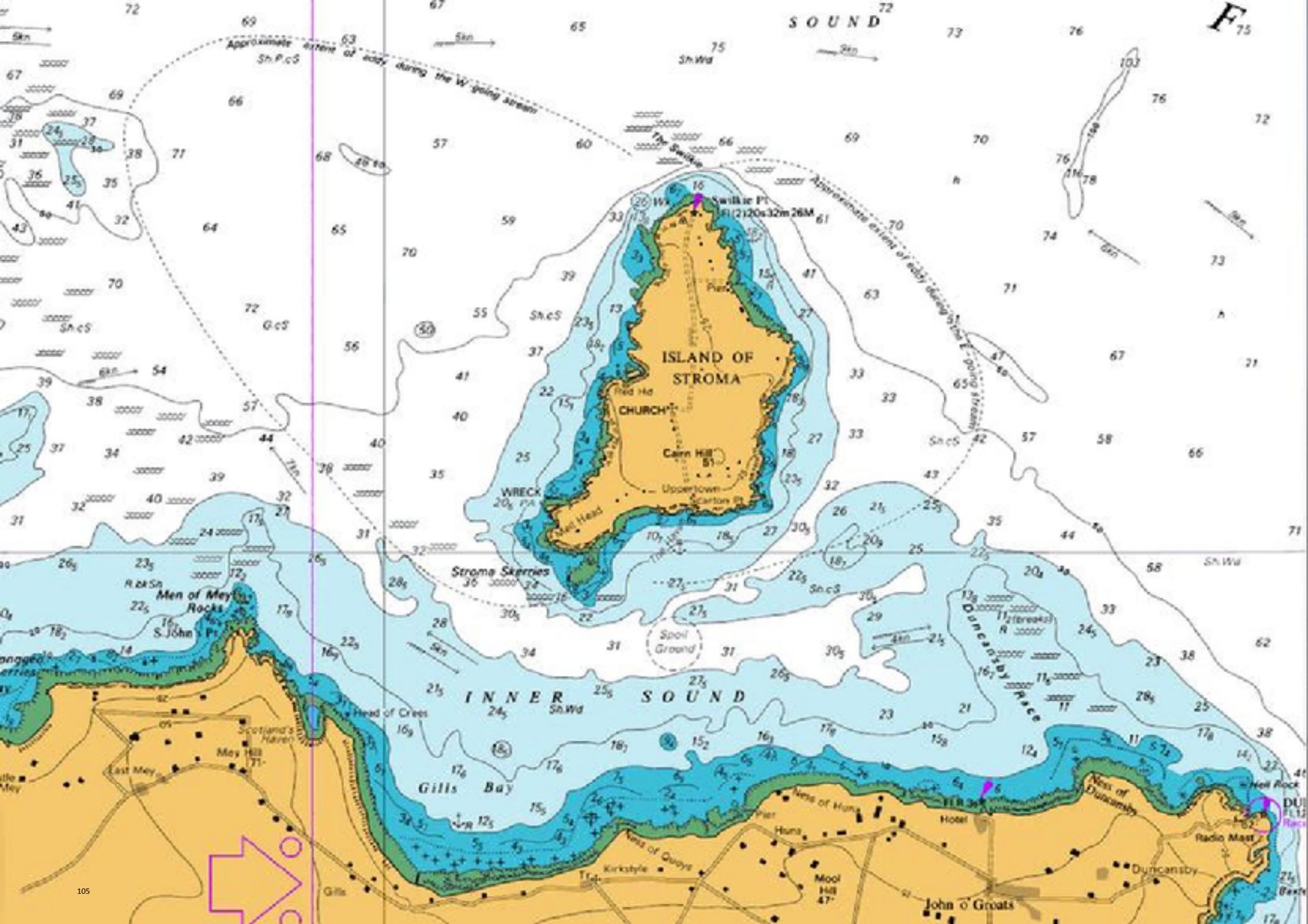






















# Hanging a Louie

Day 53, Harrow – from Team Manager's diary:

*“One thing about this trip, no achievement is cherished long, a new challenge always lies ahead.”*



# **Hanging a Louie**

*Scotland's North Coast*

**Hero to Zero (ish)**

**Flatlining - Nerves and Emotions**

**Vanman - Durness**

**Wrath Worries**

# Brough

Day 53 – 12<sup>th</sup> July  
Harrow - Brough

4.86 nm

01:31 hrs

O.A. 3.2 kts

Shortest Day  
Easy Come, Easy Go



# Duncansby Head

Day 52 – 11<sup>th</sup> July  
Dunbeath - Harrow

38.37 nm  
08:22 hrs  
O.A. 4.59 kts

Reputations and Reality  
Chasing the Weather  
Going well







# Strathy Point

Day 54 – 13<sup>th</sup> July  
Brough – Clasheddy

33 nm  
07:18 hrs  
O.A. 4.52 kts

Cape Wrath Lite





# United Kingdom

## Ireland

### Isle of Man

Inverness

Aberdeen

Dundee

Perth

Kirkcaldy

Glasgow

Edinburgh

Ayr

Londonderry / Derry

Letterkenny

Belfast

Sligo

Irish Sea

Blackpool

Leeds

Manchester

Hull

Liverpool

Sheffield

Stoke-on-Trent

Nottingham

Leicester

Norwich

Bilston

Birmingham

Cambridge

Cardiff

London

Bristol

Feltham

Barnstaple

Southampton

Portsmouth

Brighton

Exeter

Plymouth

English Channel

Antwerp

Lille







# Cape Wrath

Day 56 – 15<sup>th</sup> July  
Durness - Scourie

30.0 nm  
07:34 hrs  
O.A. 3.96 kts

Heaven and Hell



























CAPE WRATH

DANGER AREA

Cursor:  
NC 26914 62046  
Elevation: 1151 ft





















# Heading South 2

*Heading Home*

Nemesis

The Long Way Around

Final Days

# Rubha Reidh - Nemesis

Day 57 – 16<sup>th</sup> July  
Scourie - Gairloch

46.4 nm  
10:31 hrs

A score to settle



























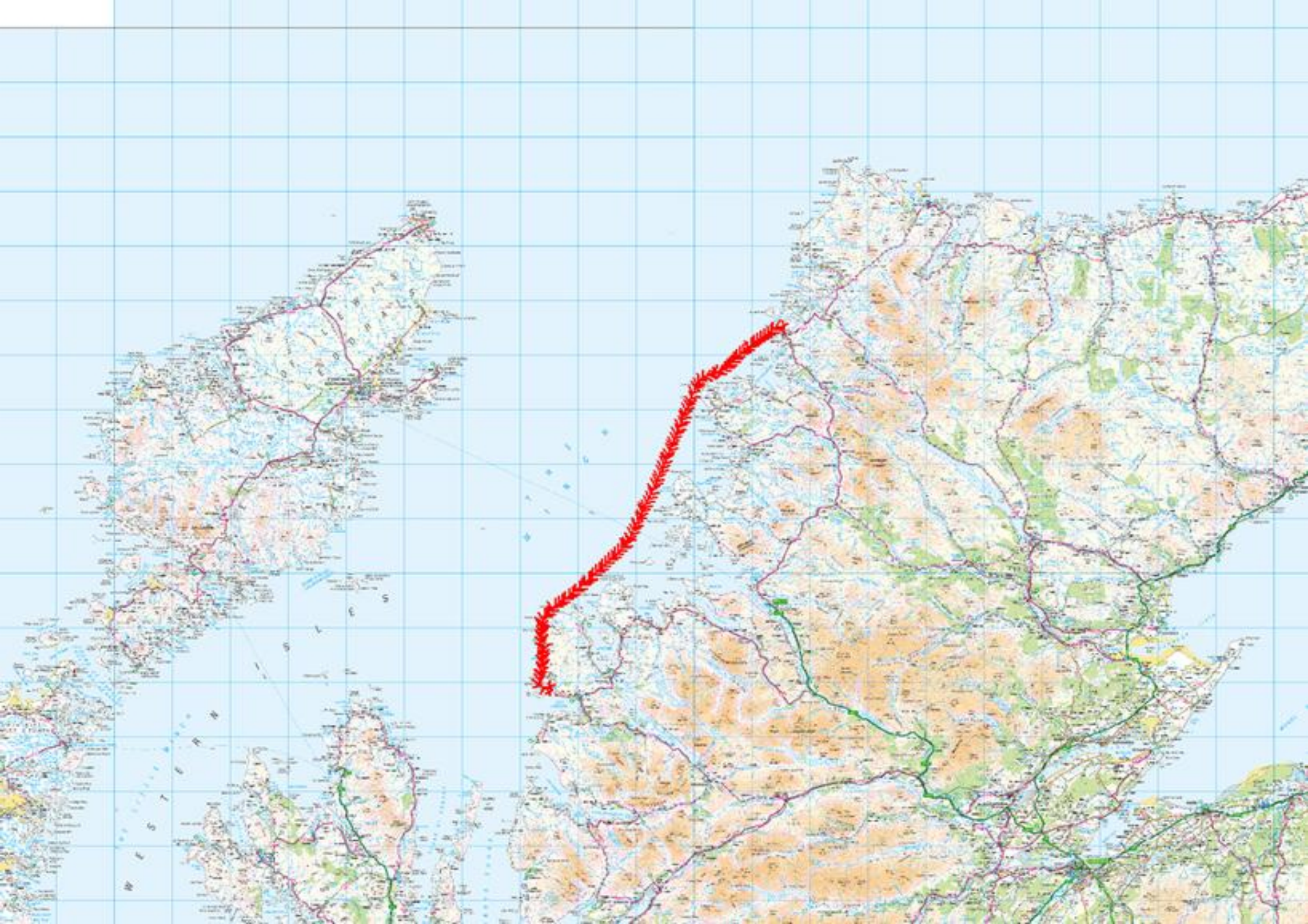




























# Ardnamurchan

Day 57 – 20<sup>th</sup> July  
Portnaluchaig - Kinlochan

25.3 nm  
06:46 hrs  
O.A. 3.74 kts

On Your Marks  
Big Dog  
Bit of a Battering





# United Kingdom

## Ireland

### Isle of Man

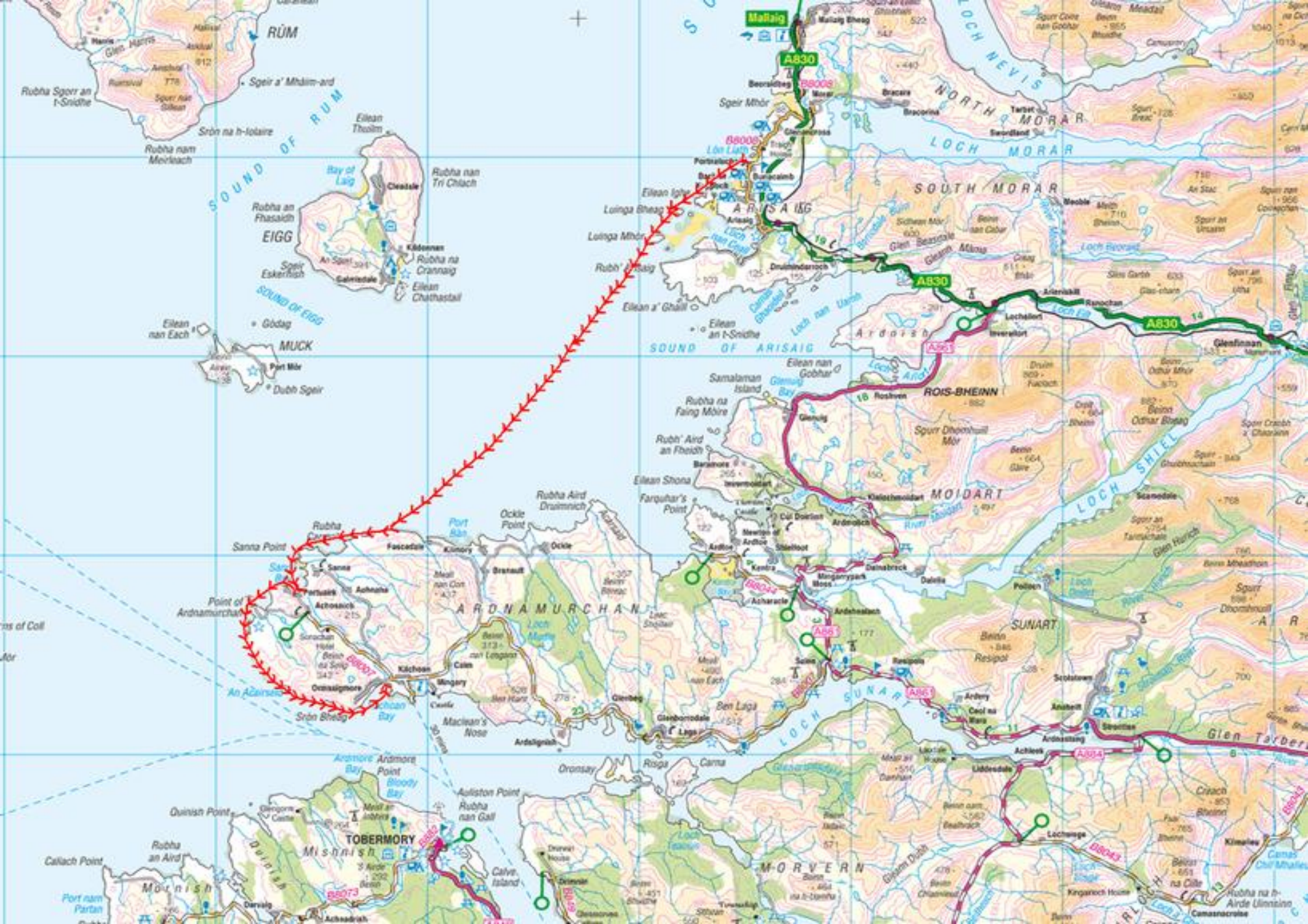


































# The Long Way Around

*The Irish Sea*

Do I?... Don't I?

Dodgy Lorry Driver

Bye-Bye Scotland







# Morecambe Bay

Day 73 – 1<sup>st</sup> Aug  
Roa Island - Bispham

16.2 nm  
03:30 hrs  
O.A. 4.63 kts

Crossing the Bay  
Pooh Sticks  
Lucky After All





# United Kingdom

## Ireland

### Isle of Man

Inverness

Aberdeen

Dundee

Perth

Kirkcaldy

Glasgow

Edinburgh

Ayr

Londonderry / Derry

Letterkenny

Belfast

Sligo

Irish Sea

Blackpool

Leeds

Manchester

Hull

Liverpool

Sheffield

Stoke-on-Trent

Nottingham

Leicester

Norwich

Bilston

Birmingham

Cambridge

Cardiff

London

Bristol

Feltham

Barnstaple

Southampton

Portsmouth

Brighton

Exeter

Plymouth

English Channel

North Sea





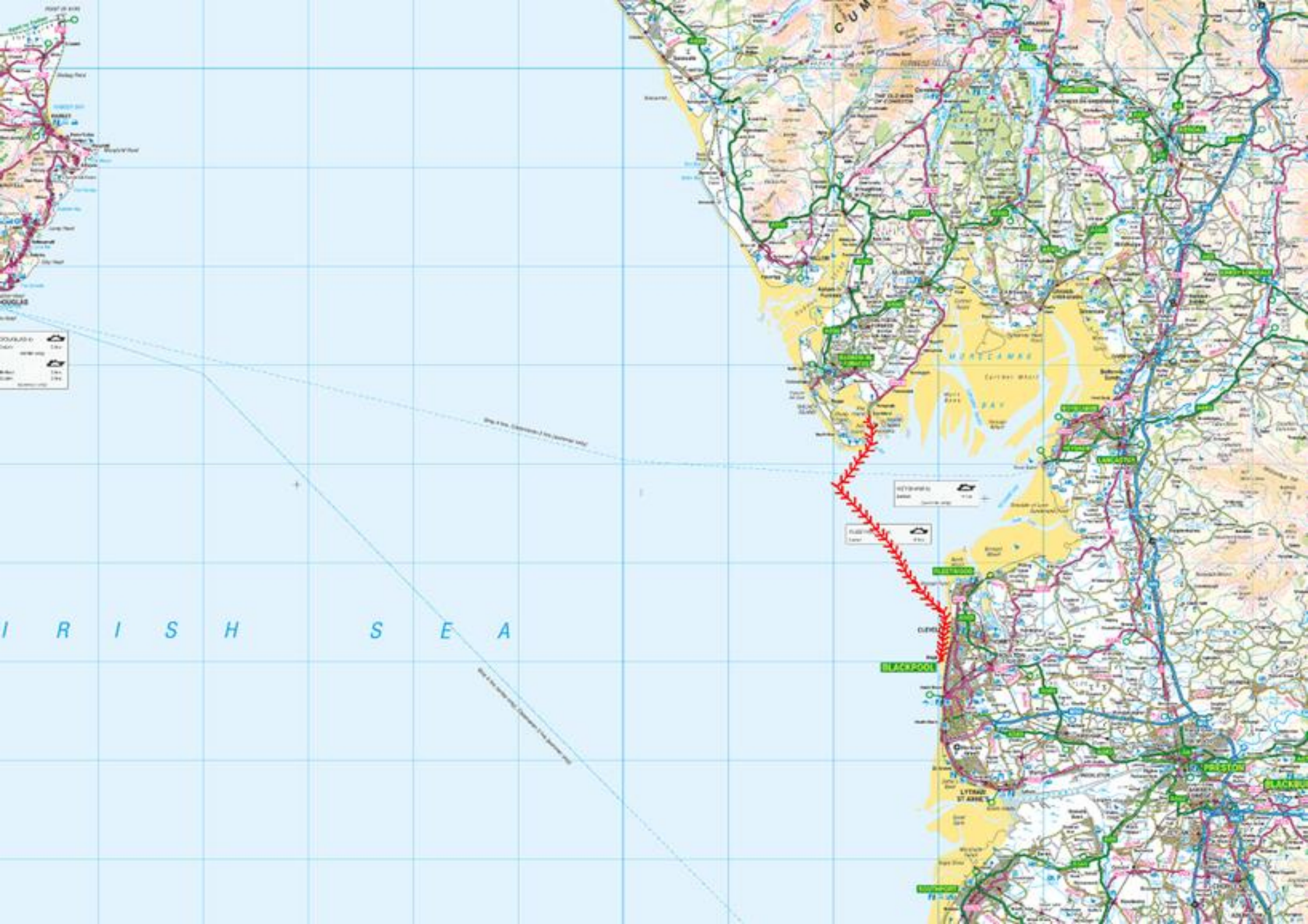
















# Nearly Home

Day 76, Llandudno – from Team Manager's diary:

*“From here to the end I will have a little voice in my head ‘Be careful, very careful.’ You only finish once you cross the line, until then the sea is as dangerous as ever. Concentration and care are needed.”*

















# The Final Day

Day 83 – 11<sup>th</sup> Aug  
Porthgain – Broad Haven

34.9 nm  
07:17 hrs  
O.A. 4.79 kts

Larry, You Tit!  
Happy Birthday!  
The Fat Lady Sings





# United Kingdom

## Ireland

### Isle of Man

Inverness

Aberdeen

Dundee

Perth

Kirkcaldy

Glasgow

Edinburgh

Ayr

Londonderry / Derry

Letterkenny

Belfast

Sligo

Irish Sea

Blackpool

Leeds

Manchester

Hull

Liverpool

Sheffield

Stoke-on-Trent

Nottingham

Leicester

Norwich

Bilston

Birmingham

Cambridge

Cardiff

London

Bristol

Feltham

Barnstaple

Southampton

Portsmouth

Brighton

Exeter

Plymouth

English Channel

Antwerp

Lille















































































# Aftermath

From the Blog:

*“So how did it all go?”*

*Well, it was cold, damp, stressful, tiring, expensive, intense, frustrating, challenging, scary, rewarding, disappointing and a touch dodgy.*

*It went pretty well, all things considered.”*





# After-effects

Back

Weight

Fatigue

Decision-making Quota

Motivation

Emotions

Confidence





# Some Statistics

	UK1	UK2
	13 <sup>th</sup> Apr – 23 <sup>rd</sup> June	21 <sup>st</sup> May – 11 <sup>th</sup> Aug
Elapsed:	72 days	83 days
Distance:	1773 nm	1860 nm
	(2040 miles, 3284 km)	(2140 miles, 3445 km)
Paddling Days:	62	72
Non-Paddling Days:	10	11





**[www.performancesekayak.co.uk](http://www.performancesekayak.co.uk)**

**Blog:**

**[anticlockwiseekayak.blogspot.com](http://anticlockwiseekayak.blogspot.com)**

**More Info:**

**[performancesekayak.co.uk/Archive](http://performancesekayak.co.uk/Archive)**



**[www.performanceseakayak.co.uk](http://www.performanceseakayak.co.uk)**

# On the Deck

OS Maps 'n' Charts

GPS

Food



















# Wildlife

**Birds – Weather Forecasters**

**Seals – on deck**

**Whales – Follow the gulls Dolphins –**

**Taking the mickey in Newquay**

**Piggies**